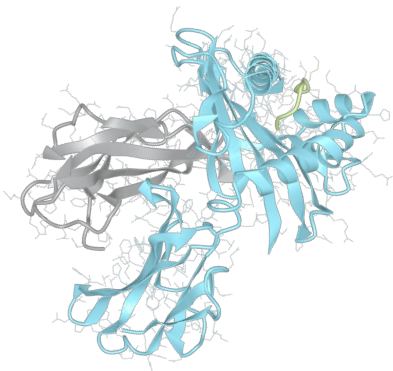


# Product datasheet



## sHLA-A\*03:01bio

A\*0301, A0301, A\*03, A03, A3

<b>Serological Name</b>	A3
<b>Peptide Load</b>	Endogenous
<b>Modification</b>	Unmodified
<b>Conjugation</b>	Biotin
<b>SKU</b>	A0301bio

### Product Description

<b>Allele Name</b>	A*03:01 B2m
<b>HLA Class</b>	HLA Class I
<b>HLA Gene Locus</b>	HLA-A
<b>Alternative Allele Name A Chain</b>	A*0301, A0301, A*03, A03, A3
<b>Alternative Allele Name B Chain</b>	-
<b>Description</b>	Recombinant, truncated Class I soluble Human Leukocyte Antigen (sHLA), naturally folded and glycosylated, loaded with endogenous peptides.
<b>Serological Name</b>	A3
<b>Serological Split</b>	-
<b>Bw4/Bw6 Assignment</b>	-
<b>Bw4/Bw6 Sequence</b>	-
<b>Allele Frequency [World Population]</b>	
<b>A chain</b>	5.10%
<b>B chain</b>	-

### Associated products

[A0301](#)  
[A0301pe](#)

## Product Specification

Product name	HLA-A*03:01bio
HLA Species	Human
Host Cell Line Species	Human
Clone Designation	YZ
Tail Specification	None
Peptide Load	Endogenous
Modification	Unmodified
Conjugation	Biotin
Complexity	Monomer
Protein Format	Recombinant, truncated, soluble, non-modified, biotinylated, endogenously loaded
Storage Temperature	4 °C (This product should be stored undiluted)
Form	Liquid
Concentration	300.0 µg/µl
Formulation	PBS/0.02% Sodium Azide
pH	7.4
Purification Method	Affinity Chromatography
Grade	Research Use Only [RUO]
Authentication Verification	Sequence Based Typing

## Protein Sequences

Alpha Chain Sequence	GSHSMRYFFT SVSRPGRGEP RFIAVGYVDD TQFVRFSDSA ASQRMEPRAP WIEQEGPEYW DQETRNVAQ SQTDRVDLGT LRGYYNQSEA GSHTIQIMYG CDVGS DGRFL RGYRQDAYDG KDYIALNEDL RSWTAADMAA QITKRKWEAA HEAEQLRAYL DGTCVEWLR R YLENGKETLQ RTDPPKTHMT HHPISDHEAT LRCWALGFYP AEITLTWQRD GEDQTQDTEL VETRPAGDGT FQKWA AVVVP SGEEQRYTCH VQHEGLPKPL TLR
Beta Chain Sequence	IQRTPKIQVY SRHPAENGKS NFLNCYVSGF HPSDIEVDLL KNGERIEKVE HSDLSFSKDW SFYLLYYTEF TPTEKDEYAC RVNHVTL SQP KIVKWRDRM

## Related Products

[A1101bio](#)  
[A1102bio](#)  
[A0201bio](#)  
[B0702bio](#)

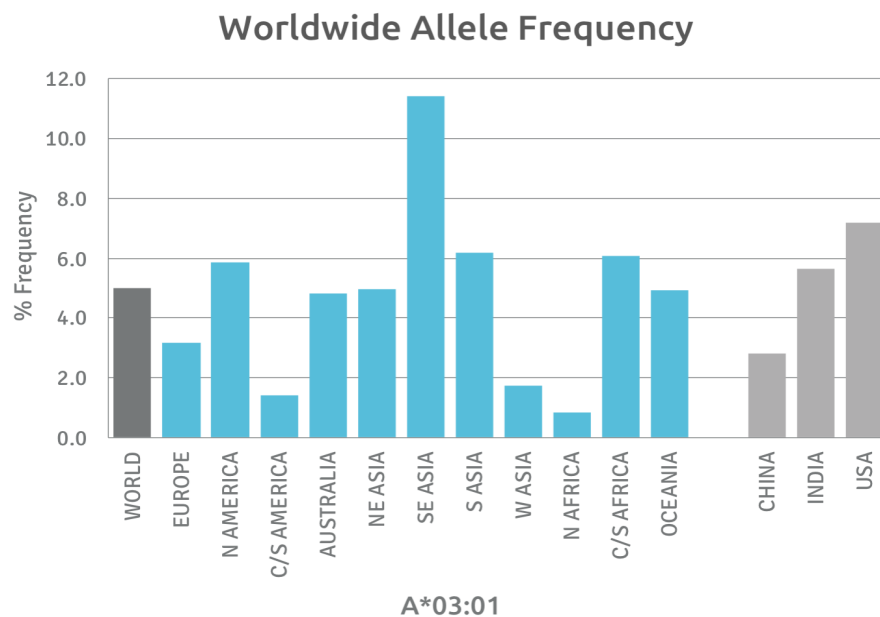
## Applications

HLA Sandwich ELISAs  
HLA Direct ELISAs  
HLA-Sera Antibody Assays  
HLA Controls in ELISA Assays  
HLA Assay Standards  
HLA Blocking Assays  
HLA Neutralizing Assays  
HLA Competition Assays  
HLA Bead Assays  
HLA Immunization Procedures

## Recommended Antibodies

W6/32  
Anti-B2m

## Allele Frequency



Please note:

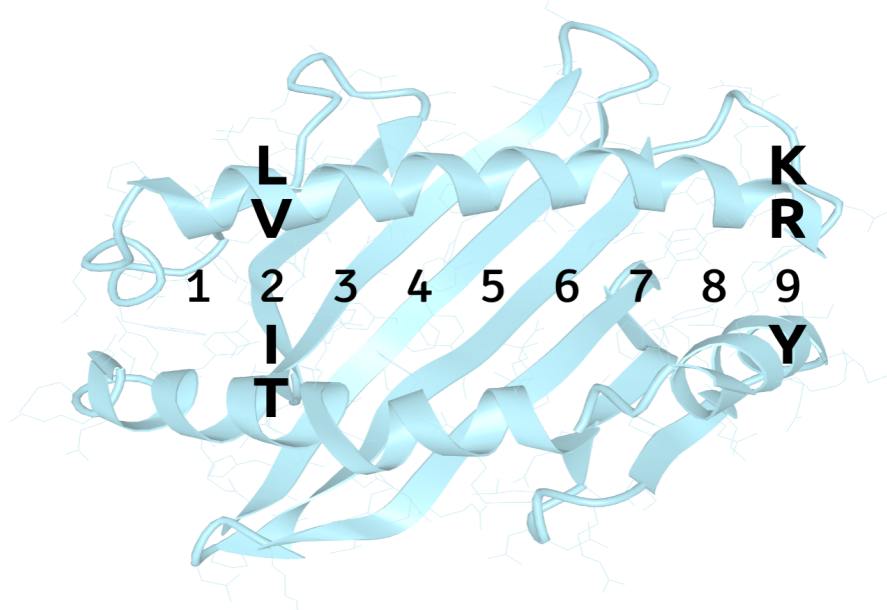
ALL PRODUCTS ARE FOR RESEARCH USE ONLY. NOT FOR COMMERCIAL USE IN DIAGNOSTIC PROCEDURES.  
For more information, please visit our Policies section on our website. For licensing inquiries, please contact

[licensing@hlaprotein.com](mailto:licensing@hlaprotein.com)

 HLA Protein  
PURE PROTEIN, LLC

## Motif

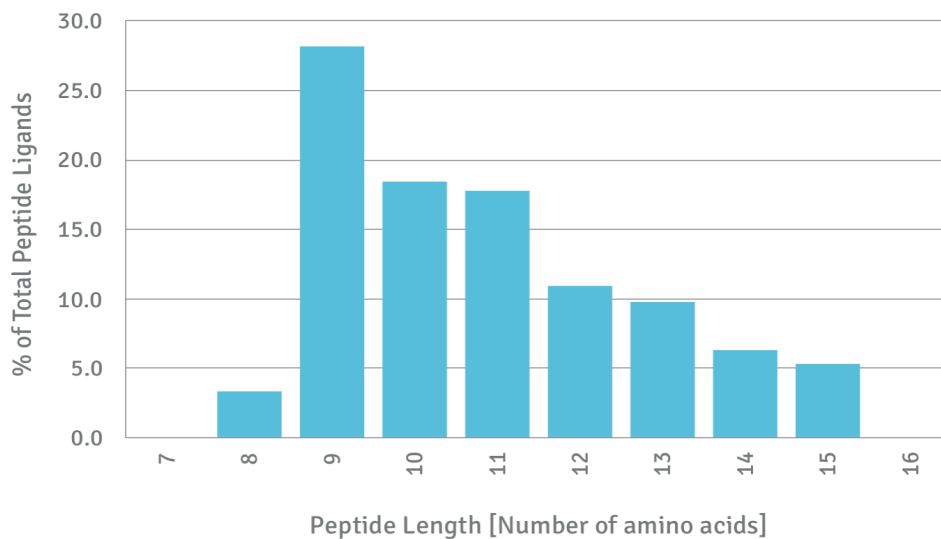
### A\*03:01 BINDING MOTIF



## Length Distribution

### HLA Length Distribution

**A\*03:01**



Please note:

ALL PRODUCTS ARE FOR RESEARCH USE ONLY. NOT FOR COMMERCIAL USE IN DIAGNOSTIC PROCEDURES.

For more information, please visit our Policies section on our website. For licensing inquiries, please contact

[licensing@hlaprotein.com](mailto:licensing@hlaprotein.com)

